



Windrow Close, Bolton

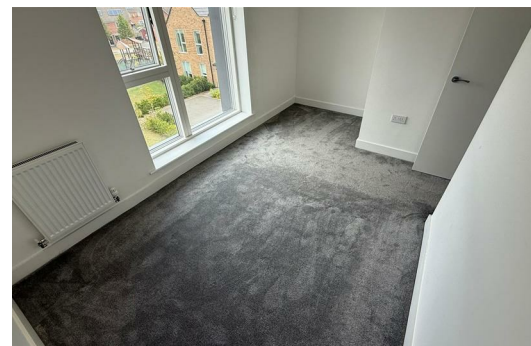
£1,450 Per Month

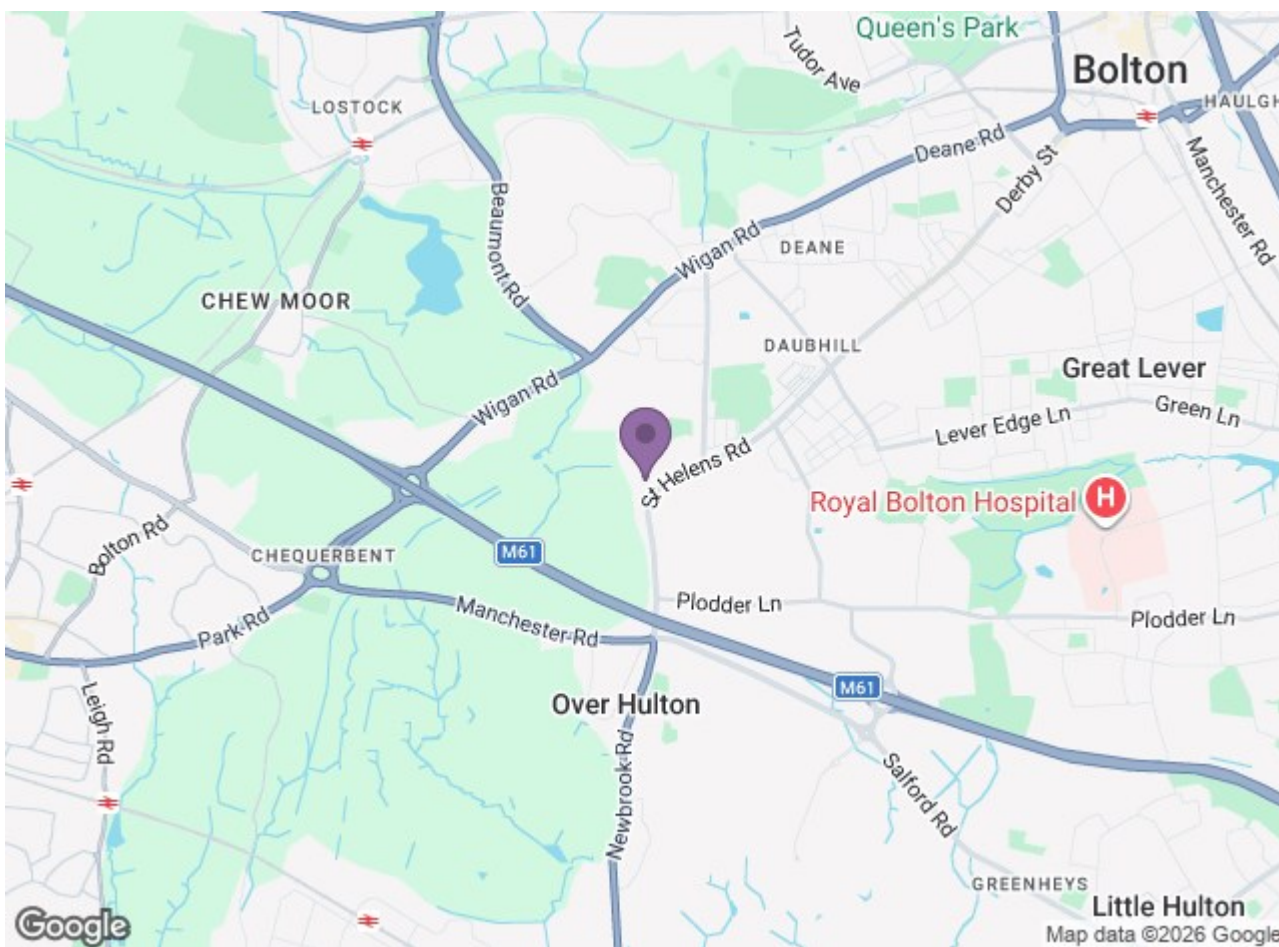
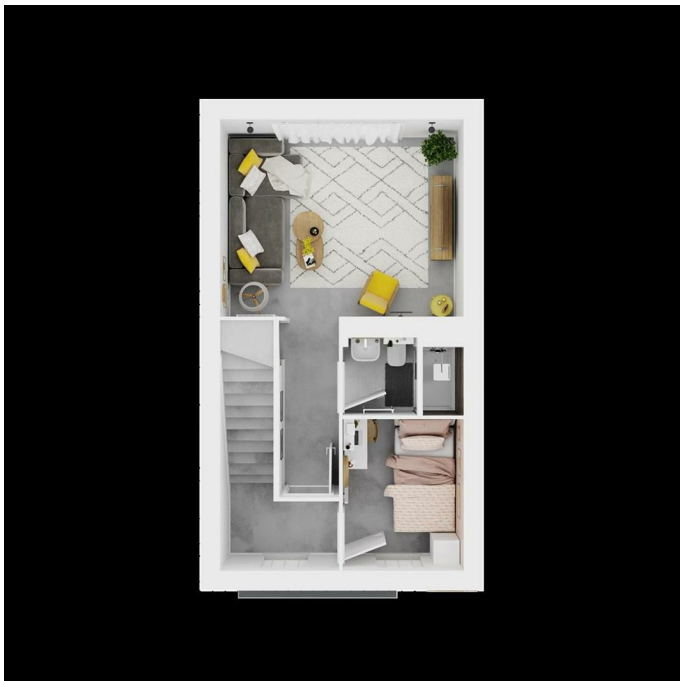
Welcome to Aerie a brand-new collection of 3 and 4-bedroom modern homes made for renters, right in the heart of Bolton. Set within a growing community, these new-build homes offer the perfect balance of green space, everyday convenience and easy transport links, providing everything you need to feel right at home.

Led by modern, intuitive design inside and out, every home at Aerie is thoughtfully built for comfortable, connected living. Expect stylish interiors, flexible layouts that suit your lifestyle, and energy-efficient features that make your life easier and greener, from the moment you walk through the door.

Step outside and you'll find the best of Bolton at your feet. This historic former mill town is now the UK's largest town, home to a diverse and welcoming community. Whether you're after peaceful parks, great schools, everyday essentials or a short trip into Manchester, Aerie puts it all within easy reach. Looking for a place to settle in and spread out? You'll find it at Aerie.

Spread across three smartly designed floors, the Eleven51 offers a modern and flexible layout perfect for family life. Step inside and you're greeted by a light-filled open-plan space, with a front-facing living room and a sleek kitchen/diner at the rear, complete with integrated appliances and views out to your private garden. Between the two sits a cleverly designed downstairs WC and utility combo for added convenience.





Energy Efficiency Rating		Environmental Impact (CO ₂) Rating	
Current	Potential	Current	Potential
85	93	G	G
<p>Energy Efficiency Rating Legend:</p> <ul style="list-style-type: none"> A: 92-100 B: 81-91 C: 69-80 D: 55-68 E: 39-54 F: 22-38 G: 1-21 		<p>Environmental Impact (CO₂) Rating Legend:</p> <ul style="list-style-type: none"> A: 1-10 B: 11-20 C: 21-30 D: 31-40 E: 41-50 F: 51-60 G: 61-70 	